

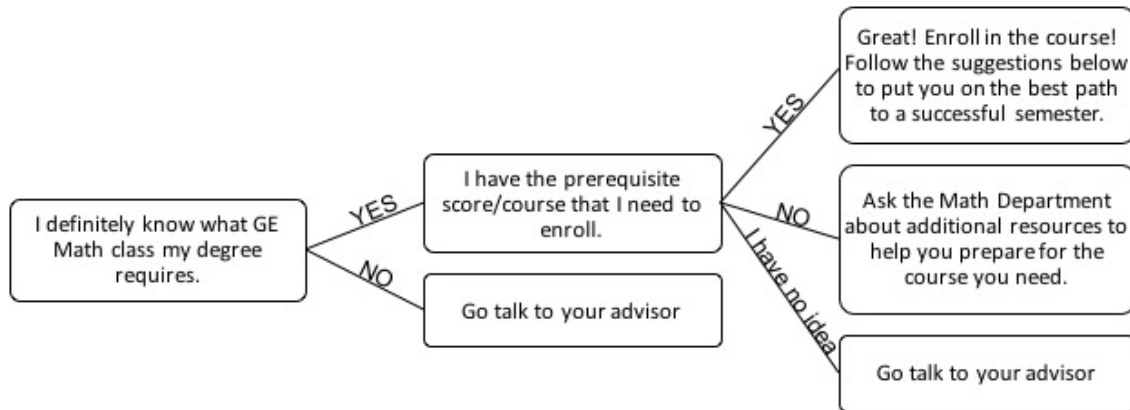
How to

SUCCEED IN YOUR MATH CLASS



AM I IN THE RIGHT CLASS?

Think that Math 1050 is the right class for you? It is worth double checking. Many degrees at DSU now require Math 1030 or 1040 instead. Making sure you are in the right class will save you time and money!



WHO CARES IF I GO TO CLASS?

Your professors do and you should too! Attending your course will directly impact your ability to pass your class by facilitating your ability to:

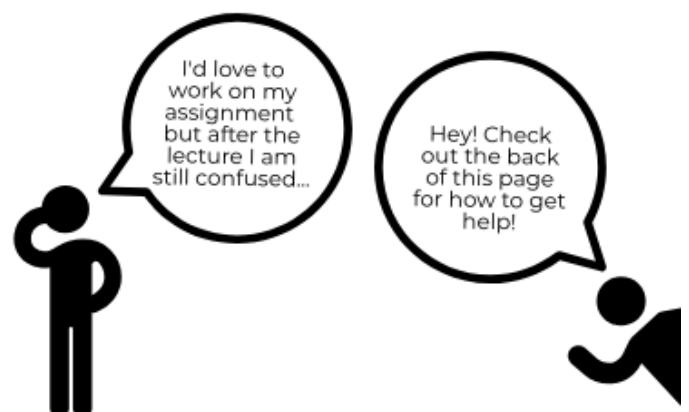


WATCH THOSE DUE DATES!

Compared to high school courses, your university math course will move very quickly! It is easier to stay on track than it is to play catch up. If an assignment isn't due for a week but your professor taught the material today, then work on it TODAY!



Do you remember who won?





WHAT ADDITIONAL RESOURCES ARE OUT THERE?

Did you know that a portion of your student fees is used to provide free tutoring?!

Take advantage of these resources - you're paying for them anyway!

1

Instructor Office Hours - Every instructor has drop-in office hours where they can help you one-on-one. Refer to your specific course syllabus for details.

2

Free Tutoring in the Math Department eLab for courses from Math 0900 to Math 2280. The eLab is located in the basement of the SNOW Building.

Monday & Friday
9:00 am - 7:00 pm

Tuesday, Wednesday, Thursday
9:00 am - 8:00 pm

Saturday
11:00am - 6:00 pm

Sunday
Closed

3

Free Tutoring is provided at the Hurricane Education Center for Math 0900 to Math 2280. Tuesdays and Thursdays from 2:00-5:00pm in the Computer Lab.

4

Free private tutoring is available by appointment only. To make an appointment, visit <https://math.dixie.edu/elab/> or inquire in the Math Department main office for more details (SNOW 134).

5

Additional resources available within various departments and programs. Check with your program advisor and professors for details.



Seriously though... PREPARE FOR AND TAKE ALL OF YOUR EXAMS!

Some helpful facts about college math exams:

- + Test scores could count towards 70% of your final grade. Take them seriously and prepare early.
- Retakes are not given and extensions are only given in EXTREME circumstances. However, your professor will be more willing to work with you if you talk to them in advance. Make sure you keep an open line of communication with your professor.
- ✗ If you qualify for accommodation we are happy to help, but it must be documented through the Disability Resource Center.
- ÷ Your schedule is busy and test dates will sneak up on you. If only there was a calendar combined with an alarm clock that we could carry around with us at all times...



YES! YOU CAN DO IT!

Persistence is key! If you work hard, follow these suggestions, and finish strong, you will come out with your Math GE requirement completed! You can do this!



Department of Mathematics Dixie State University

Department Chair - Ross Decker
Email: decker@dixie.edu
Phone: 435-652-7763
Office: SNOW 134B

Math Advisor - Kathryn Ott
Email: ott@dixie.edu
Phone: 435-879-4253
Office: SNOW 137

Admin. Assistant - Michele Tisdale
Email: mtisdale@dixie.edu
Phone: 435-652-7984
Office: SNOW 134

Math Department - SNOW 134
eLAB - SNOW 002